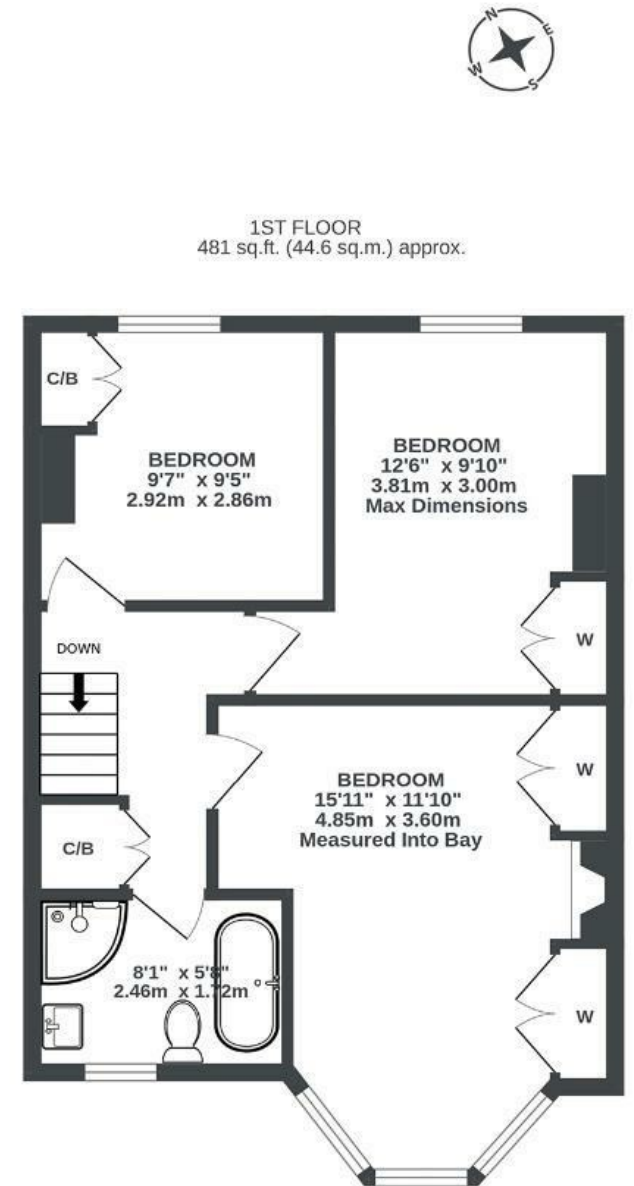
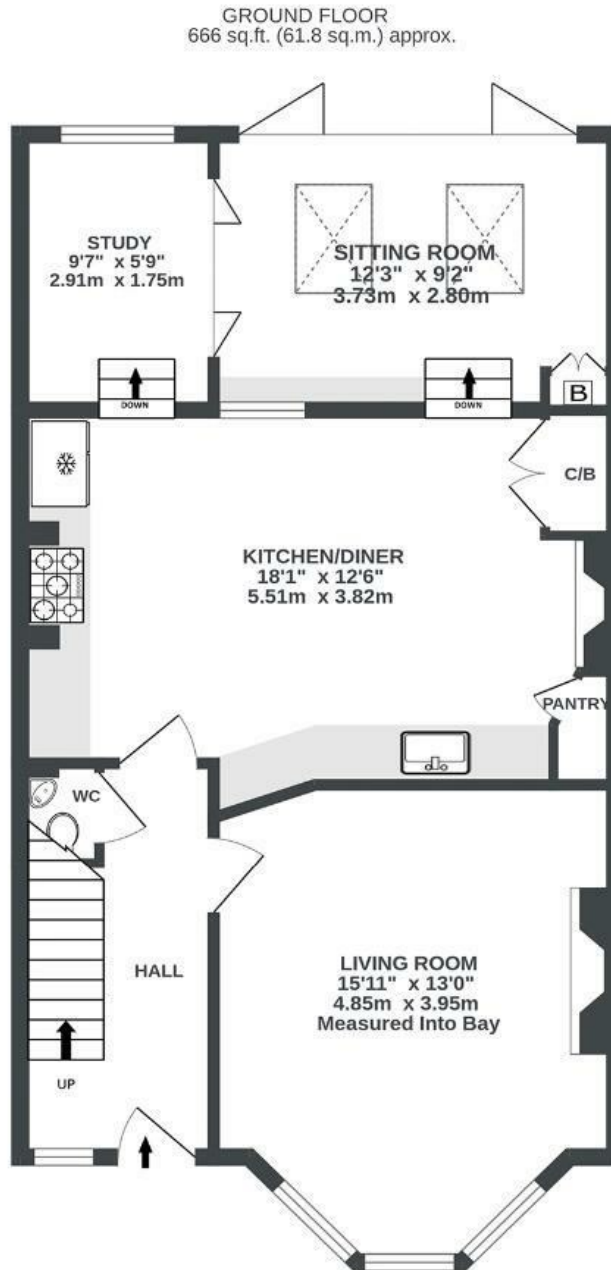


# Selworthy Road

KNOWLE

APPROXIMATE FLOOR AREA  
106.5 SQM / 1146 SQFT



Illustrations are for reference purposes only, measurements are approximate, not to scale.



Boardwalk

# Selworthy Road

, BRISTOL

---



£550,000



3 Bedrooms



BS4 2LF



1 Bathrooms

---

*"The view from the back bedrooms is pretty special all year round, but on New Years' Eve it's pure magic. In less than half an hour walk, we can go from being at Temple Meads to being in the peace of our garden with a drink in hand - it really does feel like an oasis. The bounty from the apple tree has led us to produce Selworthy Cider, which we've delighted in sharing with friends. We've found a wonderful community here, in part through fitness classes and the community garden at Redcatch Park"*

